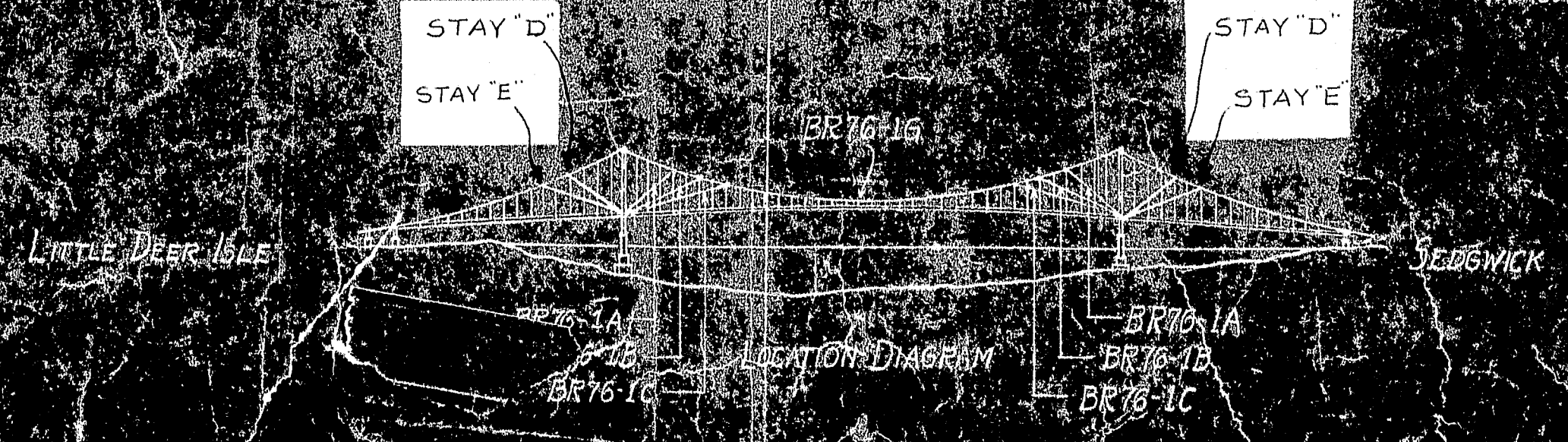
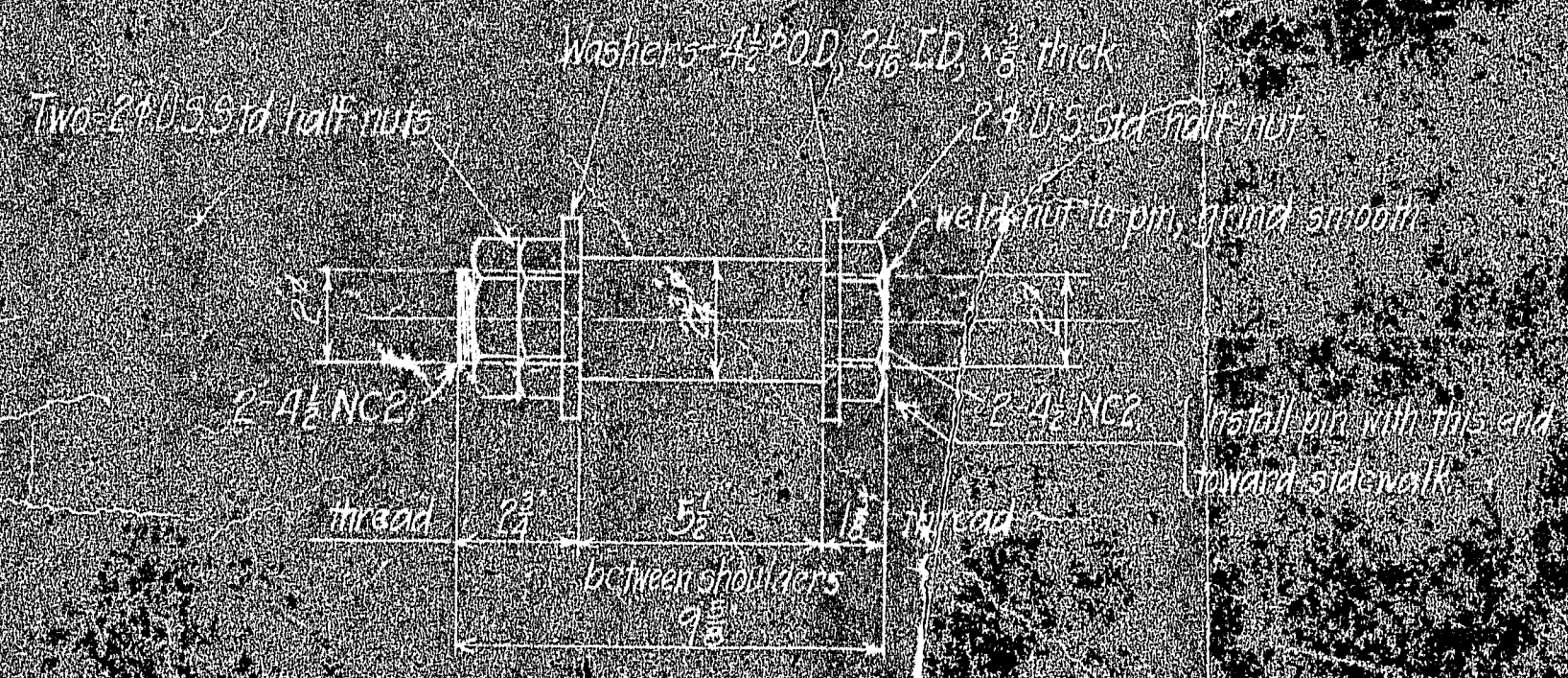
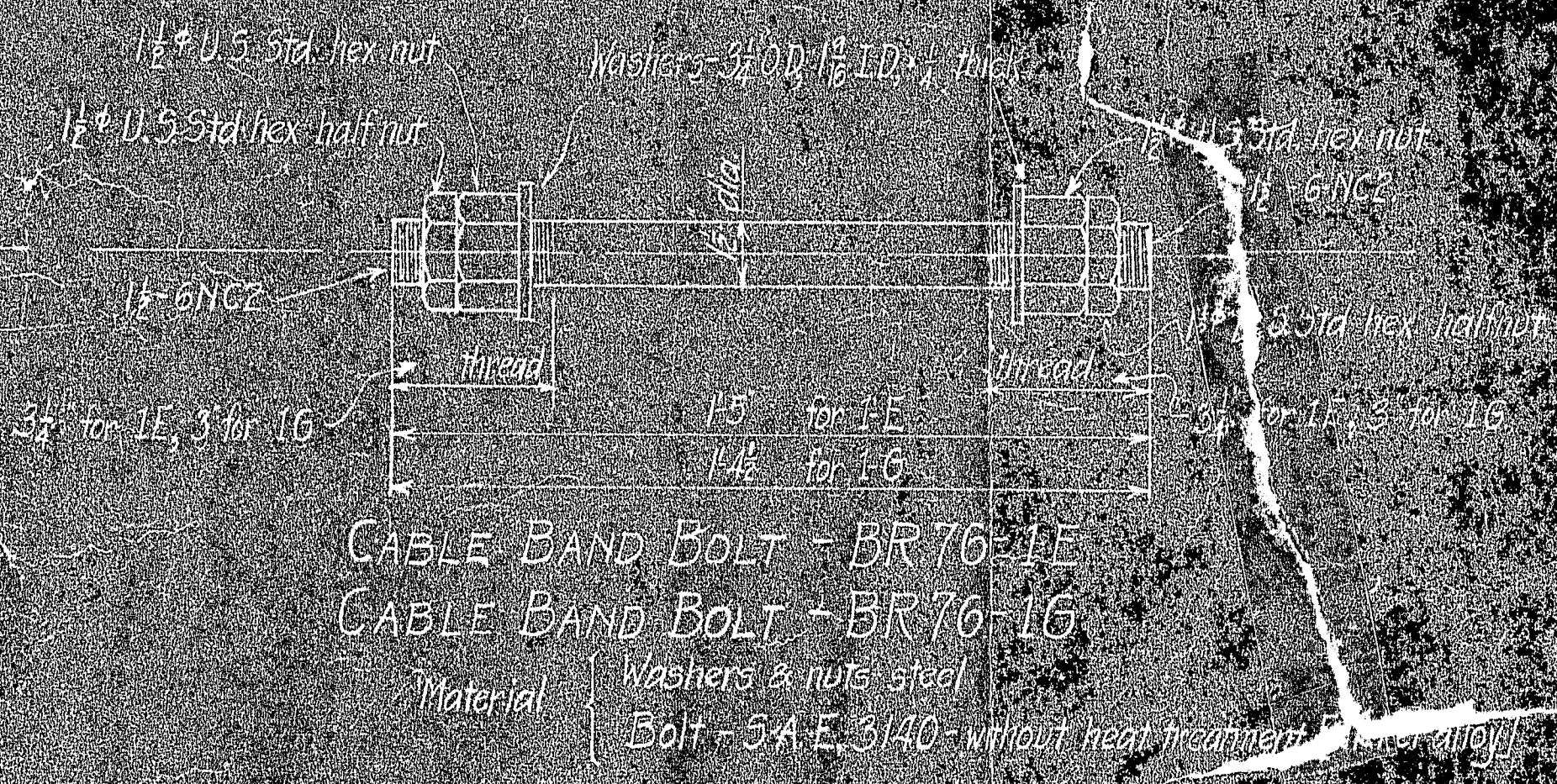
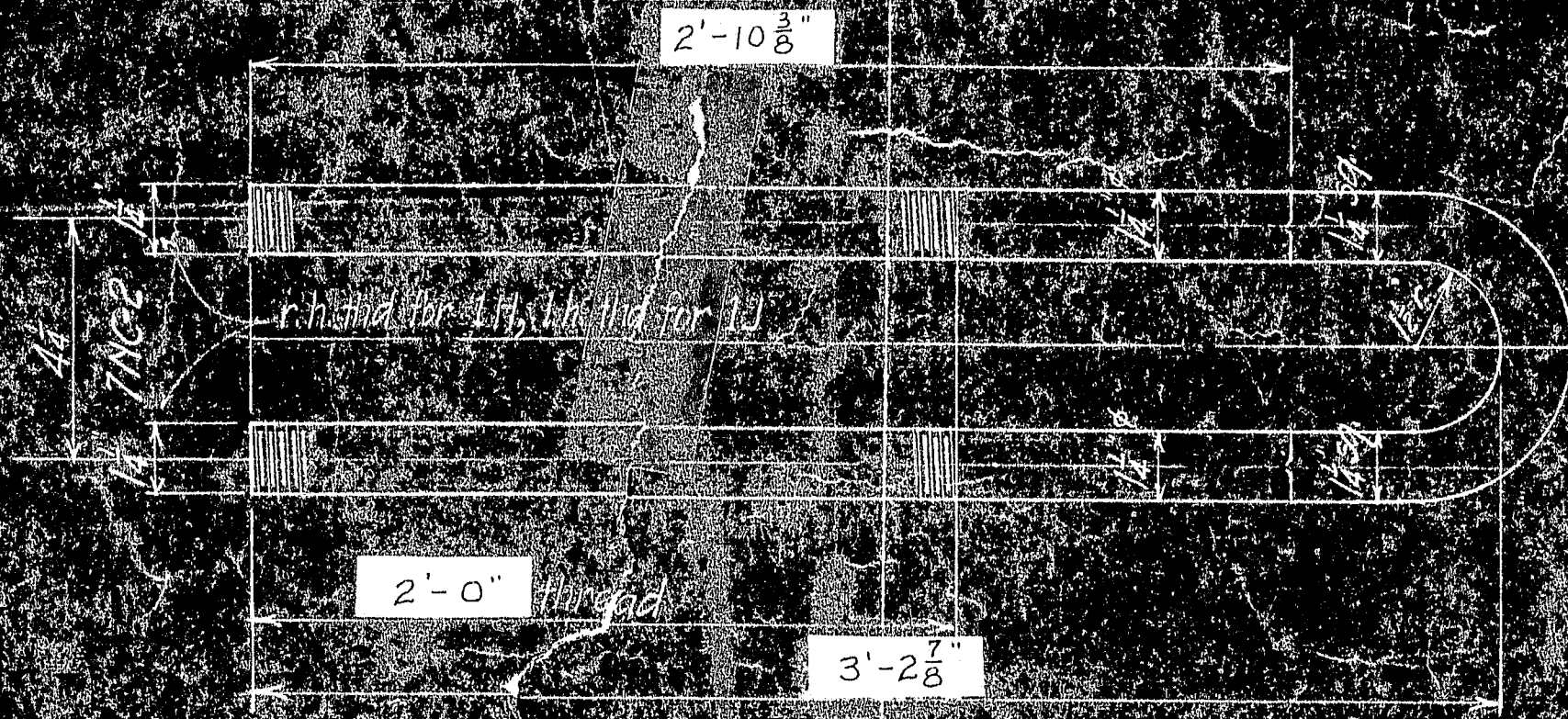


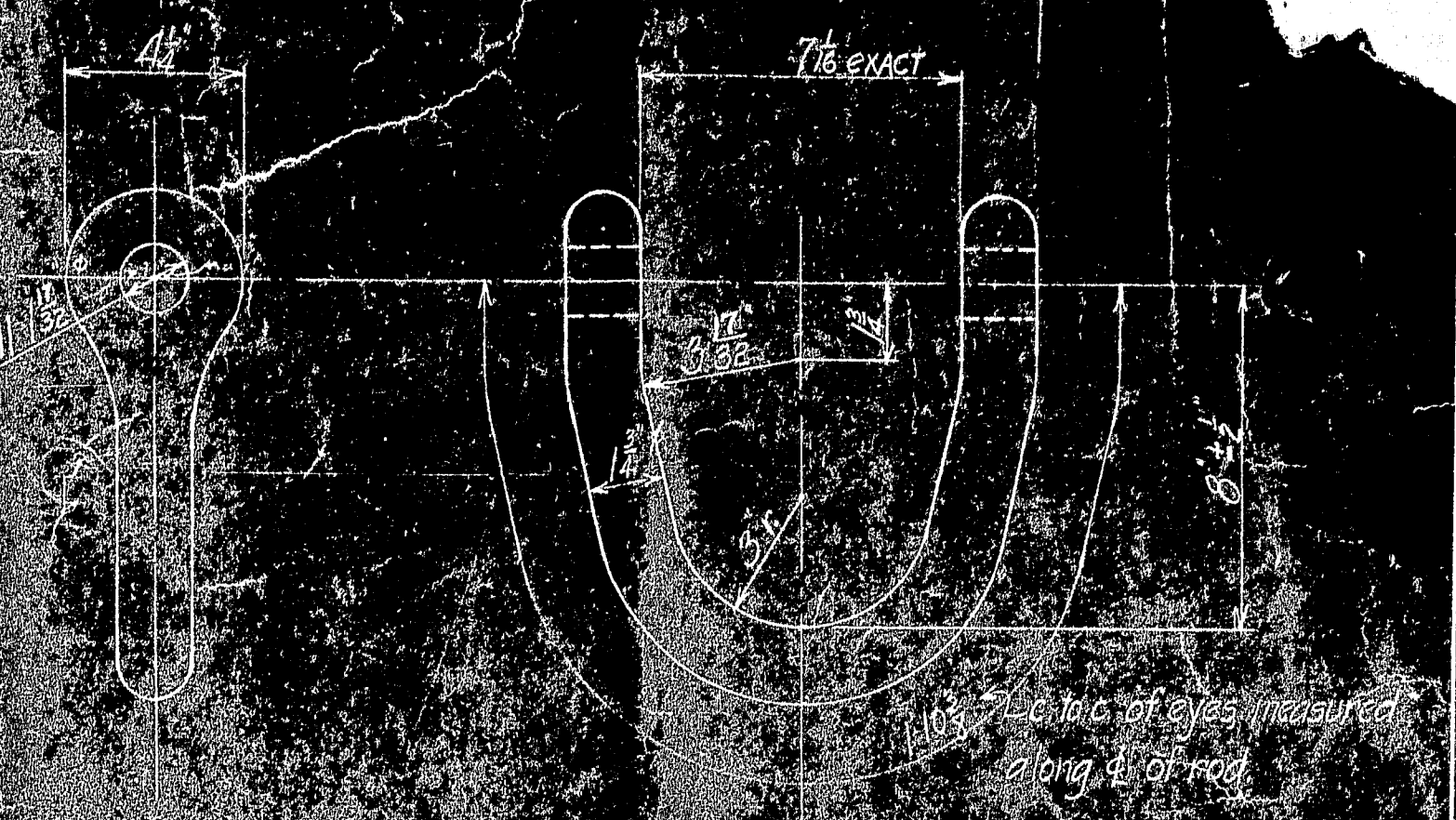
ALL LENGTHS AT 10,000* TENSION - TEMP. 68°F.
PRESTRESS, MEASURE AT 10,000* AND MARK AS SHOWN

DETAIL OF CABLE STAYS

MARK	A	B	C	D
STAY "D"	137'-4 5/8"	136'-3 3/8"	136'-3 3/8"	140'-0"
STAY "E"	177'-9"	176'-7 1/2"	176'-7 3/4"	180'-4 3/8"



APPROVED 7-17-39
ROBINSON & STEINMAN



BR76-1J	8	STIRRUP
BR76-1H	8	STIRRUP
BR76-1E	8	OPEN SOCKET PIN
BR76-1I	8	CABLE BAND BOLT
BR76-1F	8	SHACKLE
STAY "E"	4	CABLE STAY
STAY "D"	4	CABLE STAY

MARK	REQ'D	MAT'L	REQ. NO.	NAME	REMARKS
BILL OF MATERIAL					
JOHN A. ROEBLING'S SONS CO., TRENTON, N.J.					
DEER ISLE SEABWICK BRIDGE DISTRICT					
BRIDGE ENGINEER ROBINSON & STEINMAN					
CABLE STAYS					
APPROVED					
ROBINSON & STEINMAN					
ENGINEERS					
CH. OR					
ENGR					
SCALE					
DES.					
DR. AFS					
TA					
CH. OR					
SERIAL					
SHEET					

BR 86 1
7-13-39

